



CANTON
SYMPHONY
ORCHESTRA

GERHARDT ZIMMERMANN
MUSIC DIRECTOR

2023-2024 SEASON VOLUNTEER HANDBOOK Canton Symphony Orchestra

A complete guide for supporting the
Canton Symphony Orchestra with your
time & talents.





RACHAEL MOSLEY

PATRON RELATIONS & OFFICE MANAGER

Rachael received an Associate of Science from Kent State University with a focus in Business and Marketing. She is a lover of the arts and passionate about people. After devoting 6 years caring for her grandfather, she was inspired to pursue a more fulfilling and rewarding career in the music industry. Rachael has been drawn to music from a very young age. She played the saxophone from middle school through high school and later learned the tuba, euphonium, and guitar. Joining the team at the Canton Symphony Orchestra, Rachael hopes to continue to develop as a musician, grow with the community and spread the joy of music to others.

Rachael's responsibilities include serving as the first point of contact for patrons of the CSO, providing guidance for programming, ticketing, travel directions, and volunteer information. Her role has expanded to include managing the administrative offices of the organization, ensuring that everything is in working order to properly conduct business. Recently, Rachael has taken over volunteer management for the CSO, growing its volunteer base significantly and streamlining the process to be much more efficient. Rachael enjoys practicing yoga, traveling, exploring, hiking, collecting rocks, creating art and music, good food and deep conversations.



GET TO KNOW YOUR CSO

The mission of the Canton Symphony Orchestra is to perform and present orchestral music at the highest possible artistic level to enrich, entertain, educate, and challenge diverse audiences in a variety of settings. In doing so, we will serve our community, manage our resources responsibly, and be accountable to our donors, audiences, employees, and volunteers.



- Canton Symphony Orchestra formed in 1937
- Canton Youth Symphony founded in 1961
- Symphony League formed in 1963
- Canton Symphony Chorus formed in 1983
- Educational Programs provided since 1974

CONTACTS:

VOLUNTEERING & QUESTIONS

RACHAEL MOSLEY
PATRON RELATIONS & OFFICE MANAGER
330-452-3434 X 100 OR 330-452-2094
RMOSLEY@CANTONSYMPHONY.ORG

AMBASSADOR PROGRAM & SYMPHONY LEAGUE

NATHAN MASLYK
MARKETING & DEVELOPMENT DIRECTOR
330-452-3434 X 110
NMASLYK@CANTONSYMPHONY.ORG

EDUCATION & COMMUNITY ENGAGEMENT MANAGER

CAROLINE EBERHARD
330-452-3434 X 104
CEBERHARD@CANTONSYMPHONY.ORG

PRESIDENT & CEO

RACHEL HAGEMEIER
330-452-3434 X 103
RHAGEMEIER@CANTONSYMPHONY.ORG



VOLUNTEER ROLES

Volunteers are our most valuable resource at the Canton Symphony Orchestra. We could not do all that we do without your help! We have several opportunities available, including helping out during our concerts and being out in the community.

Training and instruction will be provided for every role, and our staff is always available to help. Start and end times vary per concert/event and assignment. *Children under 14 may volunteer if accompanied by a guardian, and children 14-17 may volunteer with signed guardian permission.

BARTENDER

Help set up and replenish the bar as the night goes on. Serve and sell drinks and concessions. Full bar serves beer, wine & limited mixed drinks. No experience required. Bartenders typically work with staff for 4-5hrs on concert night, but shorter shifts are always available by request! Be prepared for light lifting, standing for extended periods of time, bending, reaching, and/or squatting. **Must be 21 or over*

COMMUNITY REPRESENTATIVE

Table events outside of the hall to engage with the community, hand out information, and talk about the programs at the symphony. The CSO will provide you with everything you need to easily transport and set up for these events. Most events are held outdoors for extended periods of time. Requires minimal setup and tear down, some lifting up to 20lbs, bending, reaching, pulling and/or squatting (for example: transporting table, chairs, tent assembly/disassembly, and picking up/dropping off materials using a wagon).

CONCERT GREETER

Use your customer service skills at our concerts by helping us welcome our patrons and direct them throughout the Zimmermann Hall. Be prepared to be on your feet for at least 90 minutes, standing in place and/or walking.

CONCIERGE TABLE

Help set out tablecloth and CSO program materials. Greet patrons in our lobby, talk about the symphony, hand out information, and take donations before the concert and during intermission. Requires money handling and using electronic payment devices. Be prepared for a combination of sitting and standing for at least 90 minutes.

DOOR GUARD USHER

Hold patrons at the door arriving late or returning from the restroom until there is a break in music so the performance is not disrupted. Requires sitting (or standing if you prefer) inside the hall entrance doorways for the duration of the concert.



VOLUNTEER ROLES

CONTINUED...

GUEST ARTIST DRIVER

Pick up and/or drop off our guest artists to/from the airport, hotel, and the hall during the week and weekend of the concert. Days and times will vary.

***The CSO will reimburse your gas at \$0.45 per mile. Our liability insurance provides coverage in case of an accident. Must be 25 or older, have a valid driver's license, and proof of insurance.*

INSTRUMENT PETTING ZOO

Interact with our community outside of the hall with CSO Staff and instruments! No experience is required, and a member of the CSO Staff will train you to properly handle instruments. The goal of the petting zoo is for children (and adults) to have a hands-on experience with real instruments, while sharing our many program opportunities. This is one of our most popular community engagement initiatives. Be prepared to be on your feet, sitting, squatting, stooping, reaching, bending, and/or holding instruments.

MERCH/CONCESSIONS TABLE

Help set up signage, tablecloths, arrange merch items and concessions in our lobby. Sell items to patrons before the concert and during intermission. Requires money handling and using electronic payment devices. Be prepared for a combination of sitting and standing for at least 90 minutes, folding garments, reaching, and/or bending.

OFFICE AIDE

Assist with a variety of administrative duties, help with projects, cold calling, and/or record archiving in our office. Help whenever is convenient for you. **Office hours: Tuesday – Friday from 9am – 5pm.*

TICKET SCANNER

Scan tickets as patrons enter the hall. Requires use of electronic device to scan tickets. Be prepared to be on your feet for at least 90 minutes, primarily standing in place.

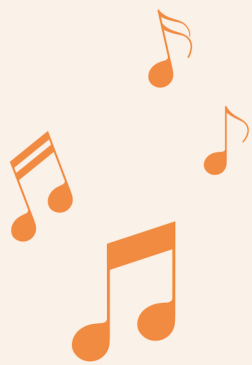
USHERS

Guide patrons to the seat designated on their ticket. Training, seating map & flashlight provided. Be prepared to be on your feet for at least 90 minutes. This role requires standing, walking, and going up and down stairs, depending upon where you are stationed in the hall.

WILL CALL

Help set up will call table with signage and stanchions. Sit across from the box office and hand out pre-purchased tickets from the Will Call box. Be prepared to be seated for approximately 90 minutes.





VOLUNTEER STANDARDS

Etiquette & Safety:

We want everyone to feel safe, welcomed, and respected at the CSO. If you experience offensive, uncomfortable or inappropriate situations, discrimination, or harassment from any patron, fellow volunteer, security, staff or board member, please advise the CSO Staff or the President & CEO immediately. A copy of our Harassment & Discrimination Policy is available upon request.

The Canton Symphony Orchestra is not liable for any accidents, illness or injuries that may occur while volunteering.

Wardrobe:

Volunteers should wear all black for most of our in-house events and MasterWorks concerts. CSO Logo clothing and accessories are always welcomed! Comfortable shoes are essential, as many roles require standing or walking for extended periods of time.

For pops concerts, you may wear jeans or dress up with the theme of the performance.

For casual & outdoor community events, festivals, and Summer Serenades, please dress comfortably and accordingly for the weather.

We will provide you with a Volunteer nametag to wear, and we kindly ask it to be returned at the end of your shift.

Communication & Scheduling:

We communicate and coordinate electronically using SignUp Genius and email. If you prefer a phone call, please let us know! Volunteer opportunities, roles, descriptions, hours, and call times for the season will be posted on the CSO website: <https://cantonsymphony.org/volunteer/>.

New Volunteers should complete the survey on our website to be added to the database. Existing Volunteers may sign up for scheduled upcoming events listed on the Volunteer page or through an email request. All roles are first come, first serve. Emails will be sent as new opportunities arise, if roles have not yet been filled, and/or as reminders for upcoming events. Please contact the CSO staff as soon as possible if you are unable to work your scheduled shift.

Expectations & Benefits:

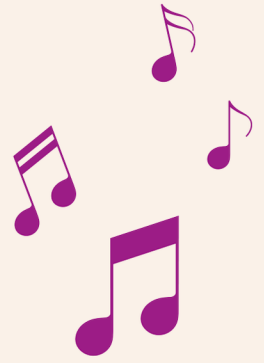
Volunteering your time is a rewarding and fun opportunity to connect with your community. The Canton Symphony Orchestra invites you to enjoy all performances for free before, during, and after your shift. You are not obligated to stay past your scheduled time. Volunteers may also redeem 50% off additional tickets for any performance you work. Please invite your friends & family! The CSO Alcohol Policy permits volunteers and staff members two complimentary alcoholic beverages while working an event. Any alcohol purchased after two drinks is discouraged, as we should remain professional while representing the CSO.

We value your services and want your feedback, whatever it may be! Please don't hesitate to communicate your needs, preferences and suggestions. We are a team!

Please contact the CSO Staff if you have any questions or concerns about our policies.
(330) 452-2094 | boxoffice@cantonsymphony.org

2023-2024 SEASON SCHEDULE

SUBJECT TO CHANGE



MASTERWORKS SERIES

- MasterWorks 1: Ode to Freedom - Saturday, October 7th at 7:30pm
- MasterWorks 2: Baroque Bash - Saturday, November 11th at 7:30pm
- MasterWorks 3: Celtic Celebration - Saturday, January 20th at 7:30pm
- MasterWorks 4: A Romantic Afternoon- Sunday, February 18th at 3:00pm
- MasterWorks 5: Mozart's Requiem - Saturday, March 23rd at 7:30pm
- MasterWorks 6: For the Family - Saturday, April 13th at 3:00pm
- MasterWorks 7: Rhapsodies from Bohemia - Saturday, April 27th at 7:30pm

POPS SERIES

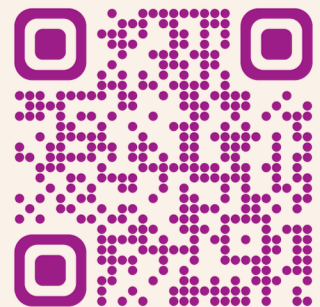
- POPS 1: The Labra Brothers - Saturday, November 4th at 7:30pm (Canton Palace Theatre)
- POPS 2: Holiday Pops with the CSO Chorus - Sunday, December 17th at 3:00pm
- POPS 3: RUMOURS: The Music of Fleetwood Mac - Saturday, March 9th at 7:30pm
- Gospel Joins Symphony - Saturday, June 15th at 7:30pm

EDUCATION & CYS CONCERTS

- Young People's Concert: Cooking with Sound - October 25th & 26th at 9:45am & 11am
- SymphonyLand Strings - January 13th at 10am & 11am
- SymphonyLand Woodwinds - February 10th at 10am & 11am
- SymphonyLand Brass - March 16th at 10am & 11am
- Kinder Concert: My Orchestra - April 17th & 18th at 9:45am & 10:45am (Cultural Center)
- Canton Youth Symphony, Youth Strings & Advanced Orchestra concerts for Fall, Winter & Spring are TBD.

DIVERGENT SOUNDS SERIES (all performances held at The Auricle Bar & Venue)

- JT's Electric Blackout - Thursday, October 19th at 7:30pm
- Anya Van Rose - Thursday, January 25th at 7:30pm
- Jean P The MC - Thursday, February 29th at 7:30pm
- Alla Boara - Thursday, April 4th at 7:30pm
- BIG POP - Thursday, May 9th at 7:30pm



Community Events are added to the schedule as they arise throughout the season. Volunteers will be notified of additional opportunities via email. Please refer to our Volunteer page on our website for schedule updates: <https://cantonsymphony.org/volunteer/>.

